

Entronet 3000

Setup Manual

Issue 1.2 Covers changes and new features for Entronet 3000 V2.000.

Contents

Contents	2
Introduction	3
Who should read this manual	3
What this manual covers	3
What this manual doesn't cover	3
Equipment and Operational Requirements	4
Entronet 3000 system compatibility	4
Entronet 3000 Workstation requirements	4
Software requirements	4
Operator Requirements.....	4
Entronet 3000 Software Installation	5
Installing the application software	5
Configuring the Database	7
How to change Database file storage location.....	8
IMPORTANT	8
How to use more than one database	8
Entronet 3000 Setup	10
Setup Log In.....	10
Setup Program Window	10
Database	11
Setup	11
System.....	11
Door Panels.....	12
Edit Deck.....	13
Edit Dwelling.....	13
Edit Alarms	14
Edit Operators	14
Remove Orphaned Residents.....	15
External systems	15
Options.....	16
Archive	16
Audio, Wav Files	16
Audio, Options.....	16
Concierge, General.....	17
Concierge, Timers	18
Concierge, Text	18
Comms.....	19
Block Imaging	19
Block Switching.....	20
Start Up	20
Help.....	20

Introduction

Who should read this manual

The target audience for this document is:

Maintenance Engineers
Installation Engineers

What this manual covers

This manual provides information on the configuration of the Entronet 3000 concierge system.

It describes how each of the system functions is configured or customised to your requirements.

What this manual doesn't cover

This manual does not cover Apex door entry system hardware installation. This is covered in the Apex Installation Manual.

This manual does not cover Apex door entry system configuration. This is covered in the Apex Configuration Manual.

This manual does not cover the operation of the Entronet 3000 system. This is covered in the Entronet 3000 Operating Manual.

It is recommended that you keep a copy of these documents with this manual for reference.

Equipment and Operational Requirements

This section describes the minimum specification for the Concierge computer equipment and the required level of competence of the equipment user.

Entronet 3000 system compatibility

Entronet 3000 concierge system is compatible with Entrotec's Apex door entry system.

Entronet 3000 Workstation requirements

Pentium P4 2GHz or better
Microsoft Windows 2000/XP/Vista
2GB RAM
Monitor (or Touch screen) capable of displaying 800x600 screen resolution
80GB HDD
DVD Rewritable
Sound card and amplified speakers
Keyboard
Mouse
Serial (RS232 or RS485) multiple port communications card (or RS485/RS232 converter for single Control Unit applications)
Ethernet port for LAN or internet connection

Software requirements

Entronet 3000 Client and Database software

Optional:

Remote viewing software for remote diagnostics (e.g. Team Viewer, Remote Assistance, etc)

Crystal Reports (for advanced report generation)

Operator Requirements

VERY IMPORTANT!

Installers of the Entronet 3000 system must have a good understanding of the use of a Personal Computer, and standard terms involved with operating applications on Microsoft Windows.

The installer must know how to:

Power up and operate a computer
Use Windows Explorer
Use a web browser, understand URL's and internet addresses
Enter passwords and data
Use the Taskbar and Start Menu
Open and close programs
Resize, and switch between, windows

Entronet 3000 Software Installation

This section describes how to install Entronet 3000 software.

Installing the application software

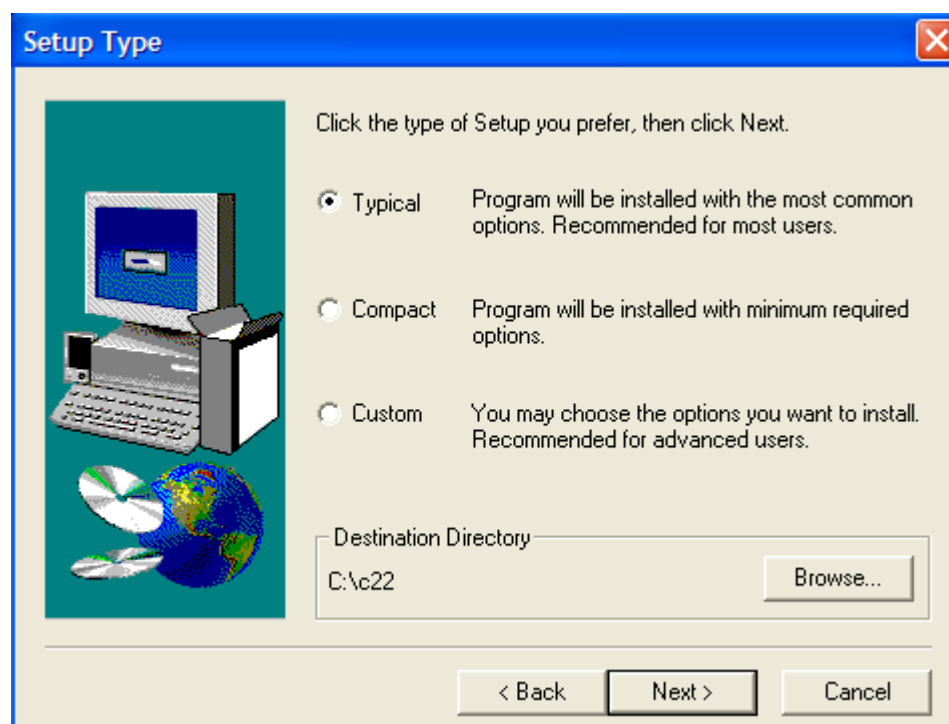
In most situations the Entronet 3000 software will be installed and configured.

If you are using an existing PC or the software is not installed on a new PC then follow the instructions below.

Enter the Setup CD in its drive.

Select Run from the Start menu and enter D:\Setup. Replace D: if your CD drive has a different drive letter.

Follow the on screen instructions until you reach the Setup Type screen.



Typical Setup

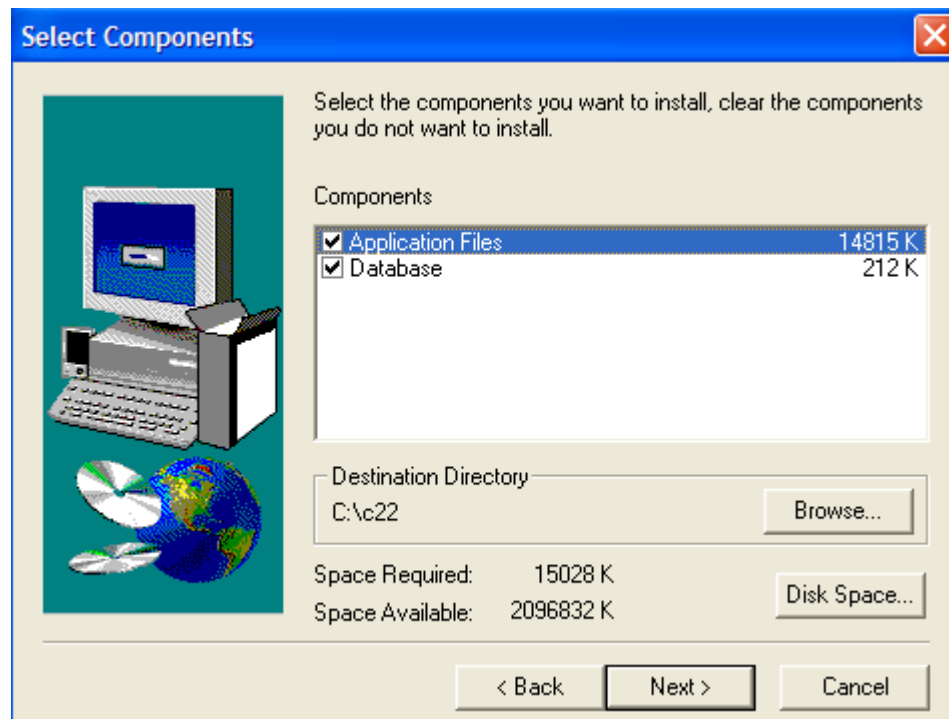
This option installs the application files on the system, but does not install or overwrite the database.

Compact Setup

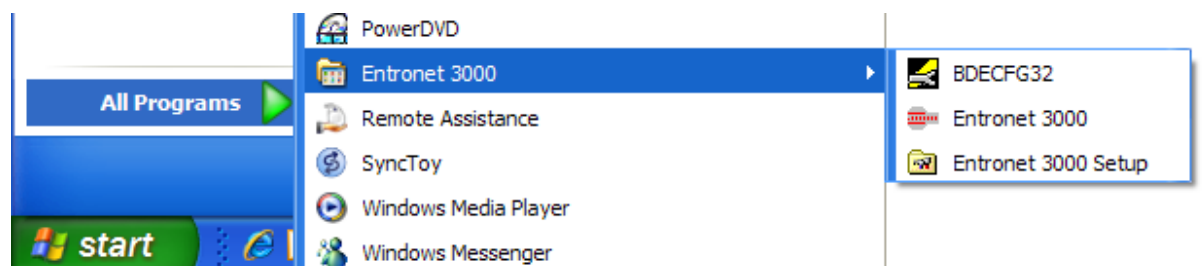
This option allows you to install a clean database on the system without changing the application files.

Custom Setup

This option allows you to choose to install either Application files, Database files or both. Note that for a new installation both boxes should be ticked.



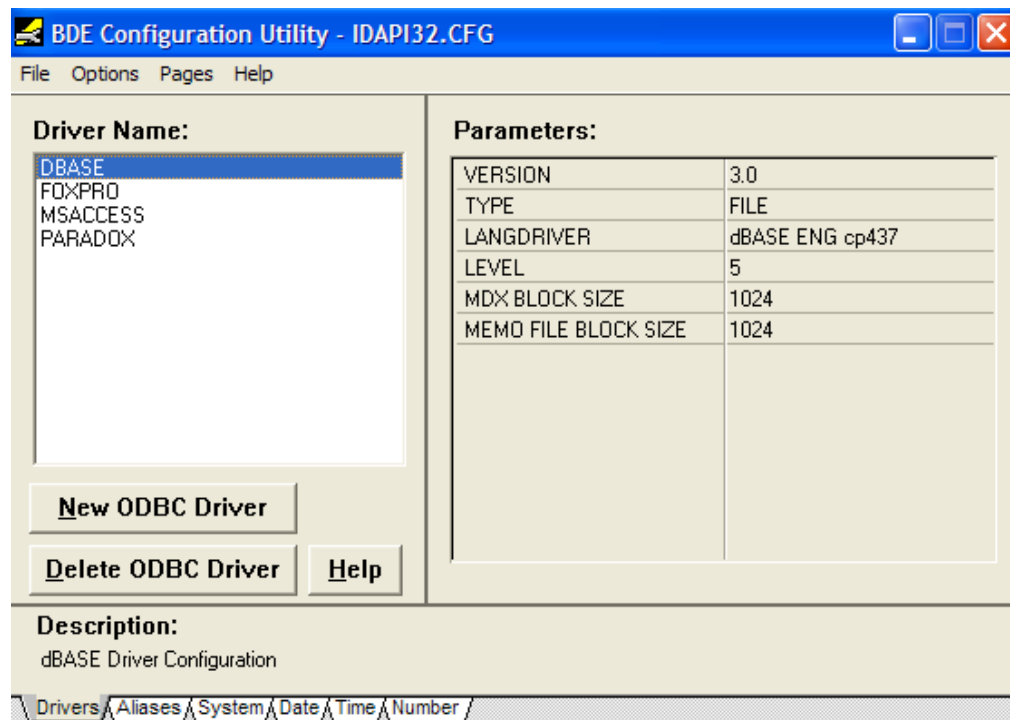
Three programs will be installed, Entronet 3000, Entronet 3000 Setup, and BDECFG32. Shortcuts to these applications will be put into the Start menu.



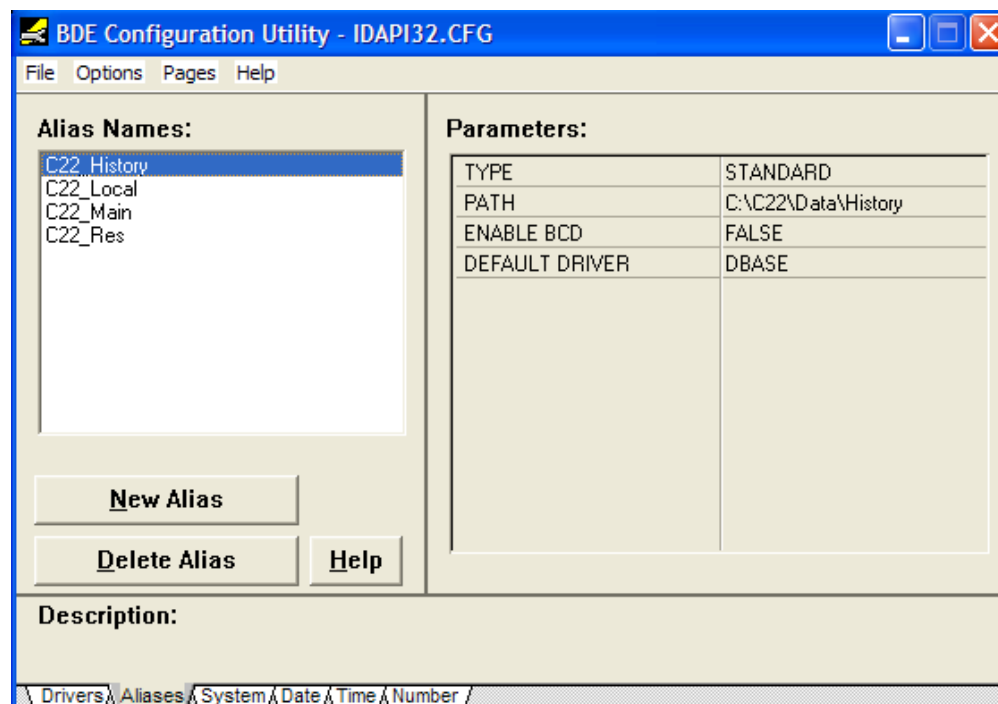
Configuring the Database

The BDECFG32 program tells Entronet 3000 the format of the database records and where they are stored. When Entronet 3000 is installed the database is set up with a standard configuration that should not need to be changed. This section describes how to configure the database for more complex installations.

Open the database setup by selecting BDECFG32 from the Start menu.



Ensure dBase driver configuration is selected. Then click on the Aliases tab.



How to change Database file storage location

An alias is a short name for a database configuration stating its format and location. Entronet 3000 needs 4 locations to store its information, 2 for operational information (_Main and _Local), 1 for archive information (_History) and 1 for resident information.

These storage locations can be anywhere on the system, e.g. a shared hard drive or a network file server. Entronet 3000 uses the database alias to tell it where to find the information.

When Entronet 3000 is installed, 4 standard aliases are setup to point the database to locations on the PC's hard drive:

Alias	Location
C22_Local	C:\C22\data
C22_Main	C:\C22\data
C22_History	C:\C22\data\history
C22_Res	C:\C22\resident

To change the location of the database files replace the default location with the new location.

Example: If you wish to use a network server, replace the file name with the path to the server file, e.g. \\server\concierge\data

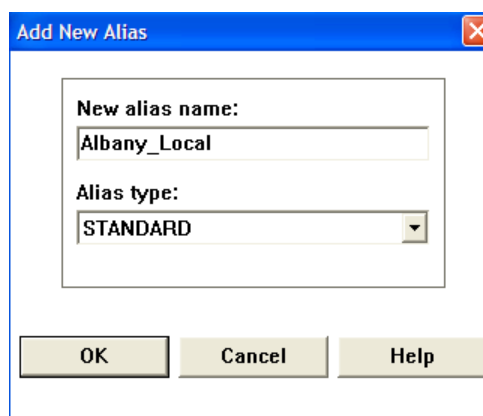
IMPORTANT

DO NOT change any other parameters as this could stop the system from working!

How to use more than one database

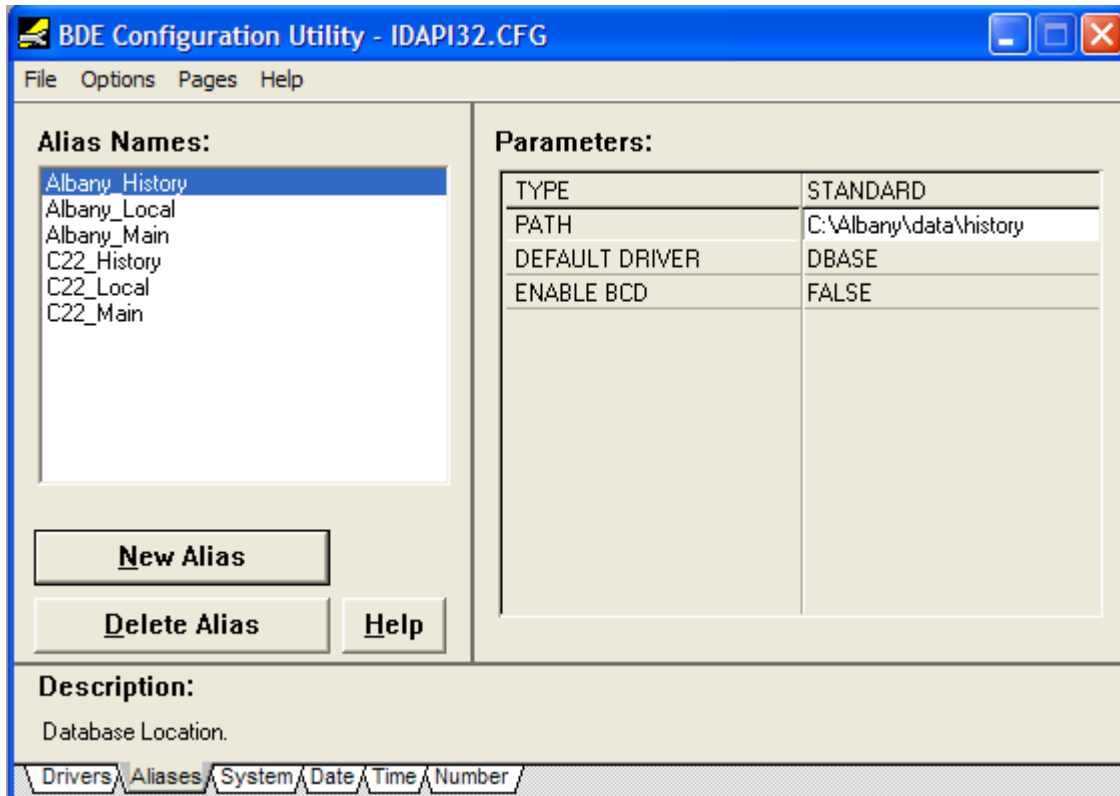
If you maintain more than one concierge system you may find it useful to create a set of aliases for each system. This will allow you to keep a master record of the system configuration on every site you maintain.

- Using Windows Explorer, create a new folder for each site you maintain, e.g. C:\Albany or C:\Nelson etc.
- Copy the contents of C:\C22 into the new folder(s).
- Open BDECFG32 and select the Aliases tab.
- Click on New Alias
- Enter name of new Alias, e.g. Albany_Local
- Leave Alias type as Standard
- Click OK
- Repeat step 4 to 7 for each new Alias i.e. Albany_Main and Albany_History
- Select each Alias in turn and enter the PATH for the file in the Parameters window
- Change DEFAULT DRIVER from



PARADOX to DBASE

Complete configuration for a second database:



Entronet 3000 Setup

This section describes how to configure the Entronet 3000 concierge system. Use this section during system installation or if features need to be changed at a later date.

Setup Log In

Select Entronet 3000 Setup from the Start menu.

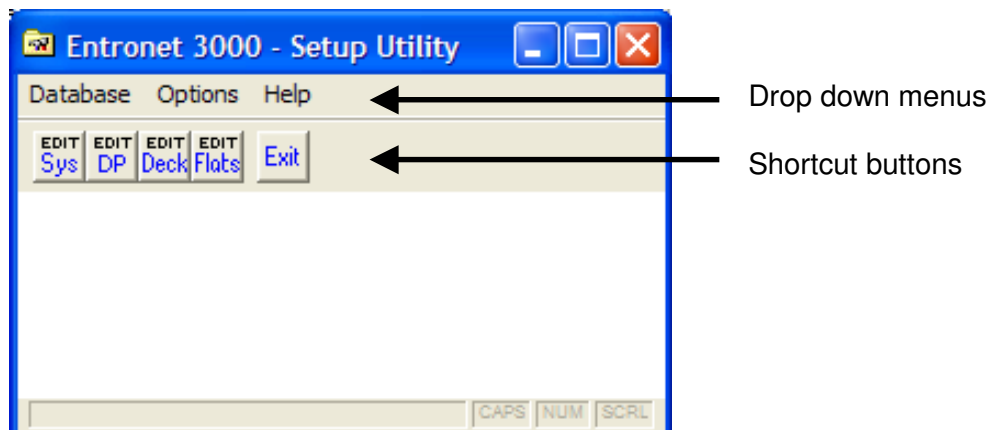


Enter your 5 digit pass code. The default code is 12345.

Note that you need Engineer level to gain access to the setup program.

Setup Program Window

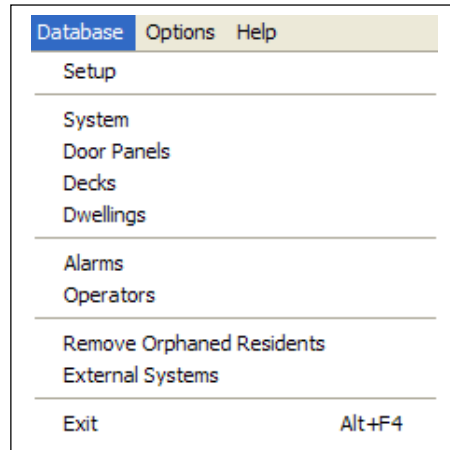
The setup utility program starts and opens a new window.



Database

The Database menu allows all of the elements of the Entronet 3000 database to be configured.

Each entry in the drop down is described below.

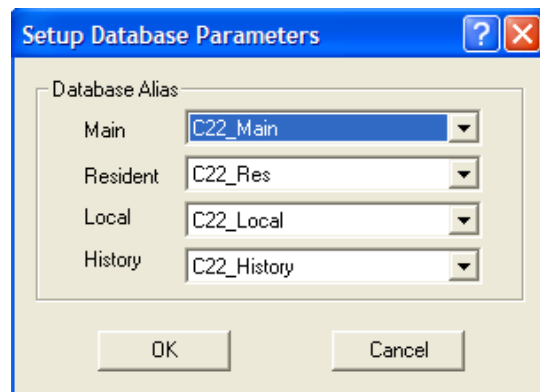


Setup

The Setup entry tells Entronet 3000 which system database to use and its location. This information is stored as a database Alias and is configured in BDECFG32 (see Configuring the Database).

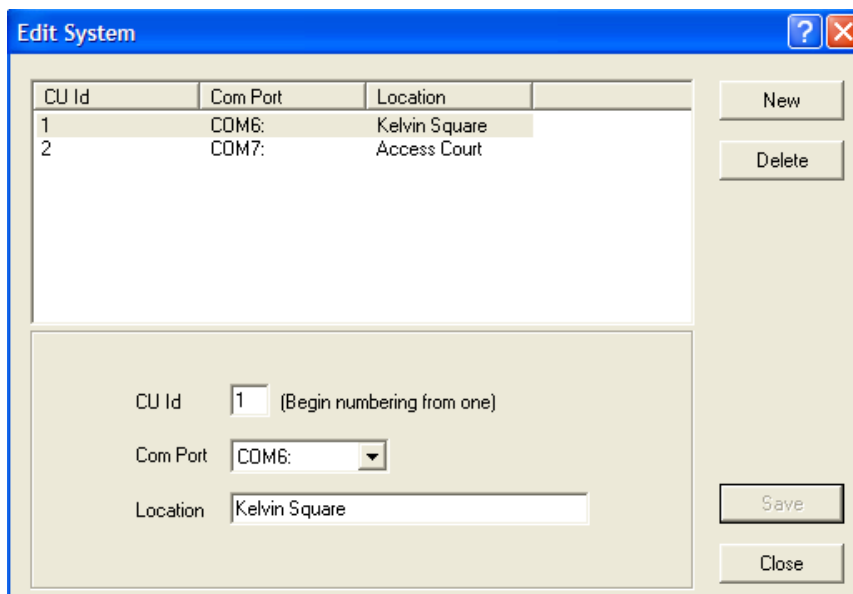
If you have more than one site database select its Aliases from the drop down boxes.

Default database Aliases are C22_..., stored in C:\C22 on the Entronet 3000 PC.



System

The System entry configures the Entronet 3000 PC's serial data communication to each block of dwellings that is part of the concierge system.



Click New to add a block of dwellings to the concierge system.

Enter a Control Unit Identification Number (CU Id), this is a consecutive number starting from 1.

Select a COM Port from the drop down list. If the concierge system covers more than one block of dwellings the PC will be fitted with one or more Multiple Port Serial Cards.

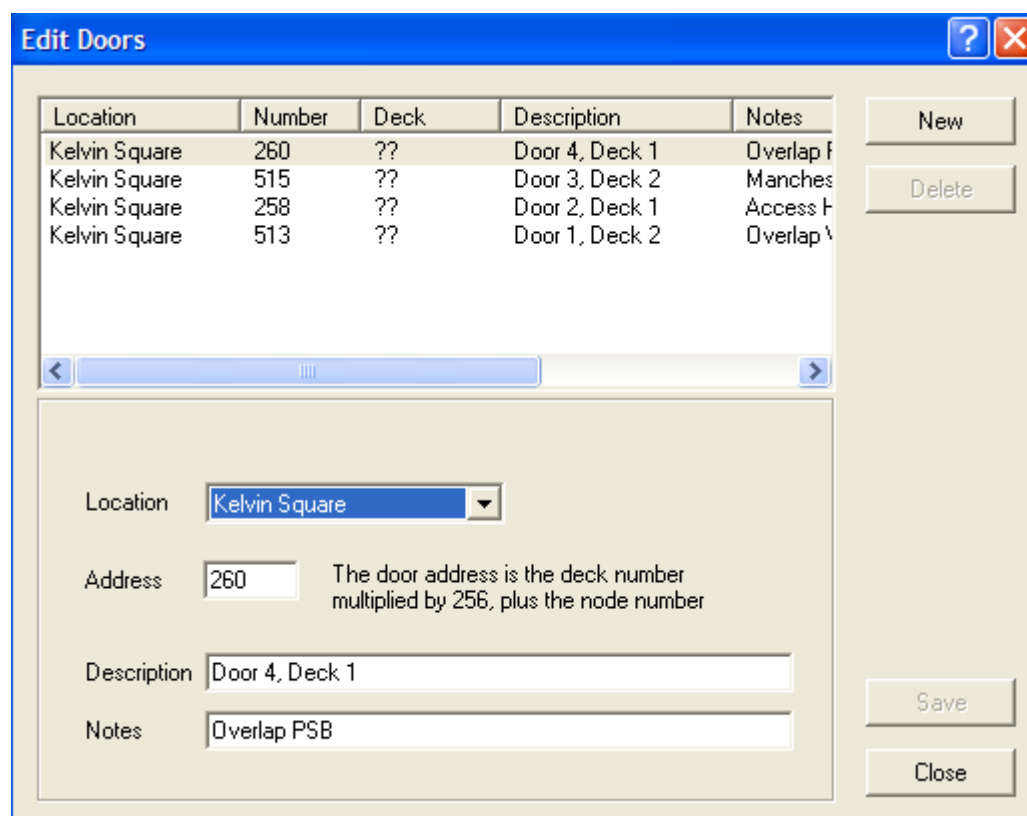
Enter a Location for the block of dwellings, e.g. block name. This location will be displayed when a call is received from this block.

Click Save to save the configuration to the database.

To remove an entry from the database, select the entry from the list and click Delete.

Click Close to close the window.

Door Panels

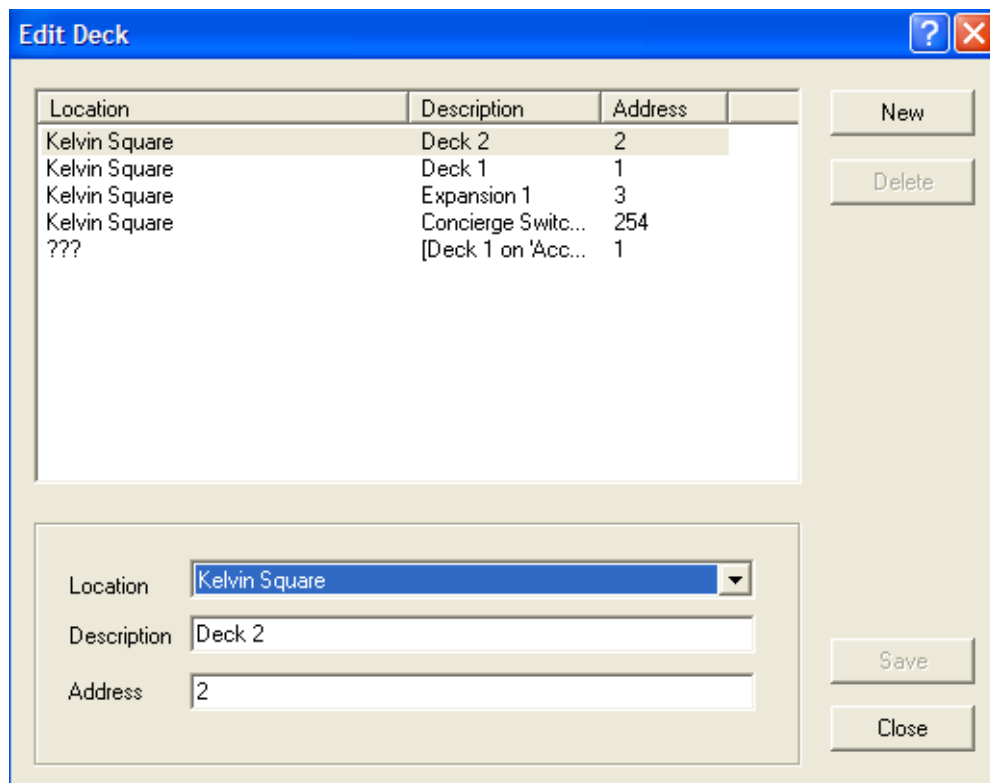


The Door Panel entry allows you to enter details of the call points into the database manually.

To add a door to the database click New. Select the dwelling block from the drop down box. Enter the address of the door panel by multiplying the deck number by 256 and adding the door number to it. The deck number is set by links on the Apex ASS0684 main board, the door number is set by links on the door panel board.

Enter a description and notes for each panel and click Save to save the entry.

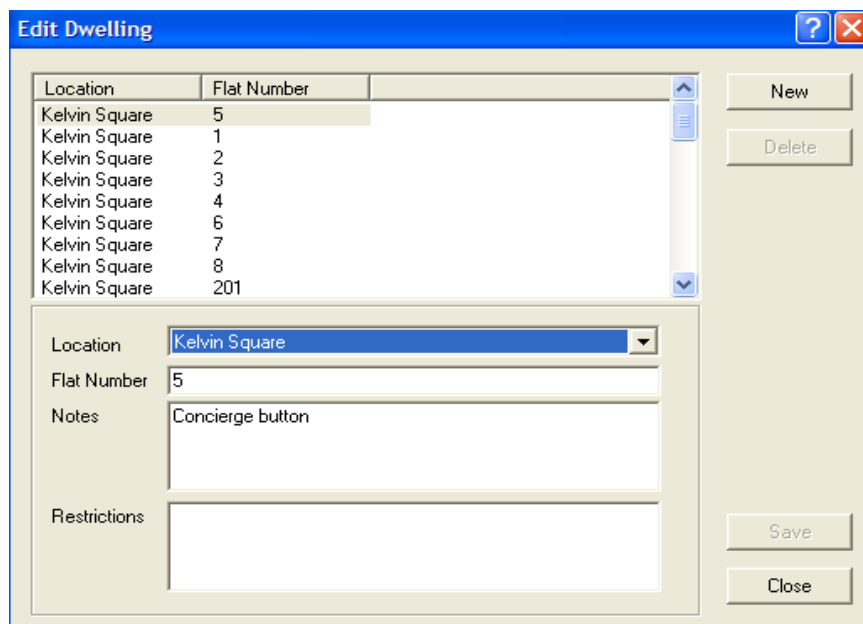
Edit Deck



Units that connect to the vertical data bus may be added manually to the database by clicking on New, selecting the control unit and adding a location and address. Note that the address is the jumper link setting on the control unit or digital expansion unit.

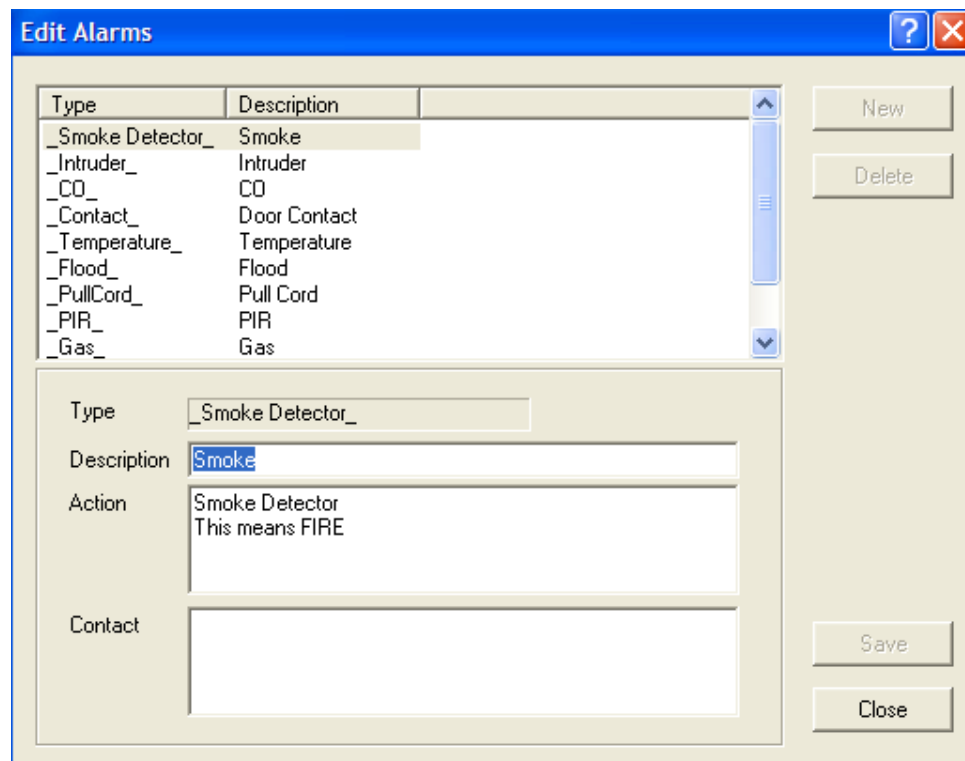
Note that the Concierge Switching Unit address is always 254. Click on Save after each entry.

Edit Dwelling



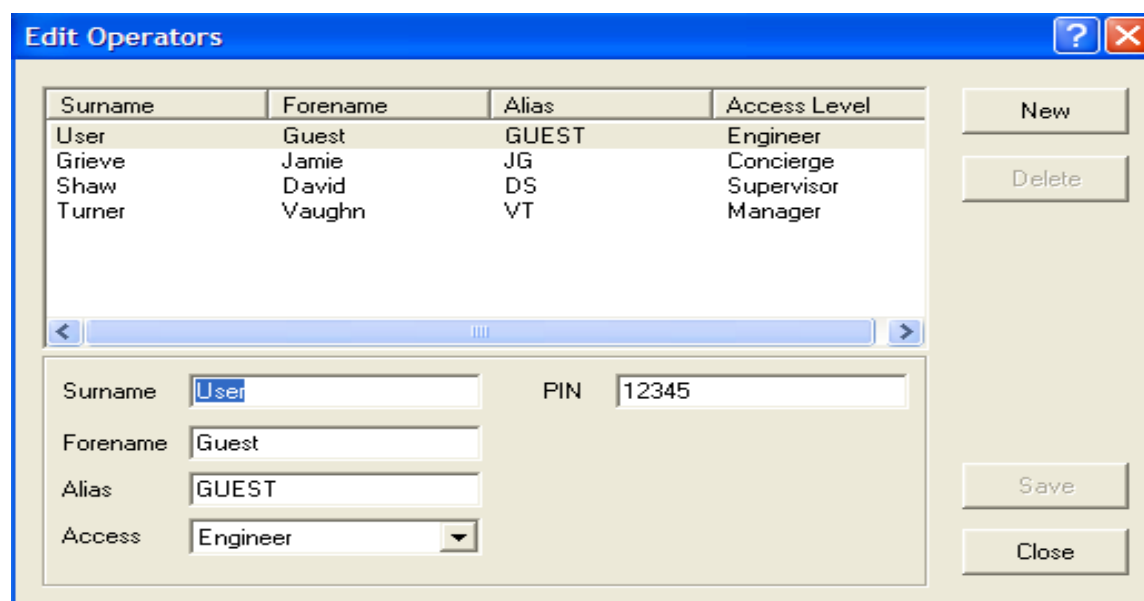
Dwellings may be added manually into the database by clicking on New, selecting the Block location and entering the flat number. Notes and Restriction may be added here or in the Entronet 3000 application. Click on Save when complete.

Edit Alarms



X-input alarms are defined in this screen. Select the alarm and add a description, actions and contacts that need to be displayed in the Alarms screen in the Entronet 3000 application. Click on Save when complete.

Edit Operators



Additional operators are added or edited with this screen. Select an entry, or add a new entry. Add Surname and Forename and an alias (abbreviation). Select the access level and enter a logon on PIN. Click on Save when complete.

Access levels are:

Engineer: gives full access to all areas.

Manager: cannot access the setup program, may not be able to reposition Entronet 3000 window depending on setup settings.

Supervisor: as Manager but cannot run reports or setup operators. May not be able to exit Entronet 3000 depending on setup settings.

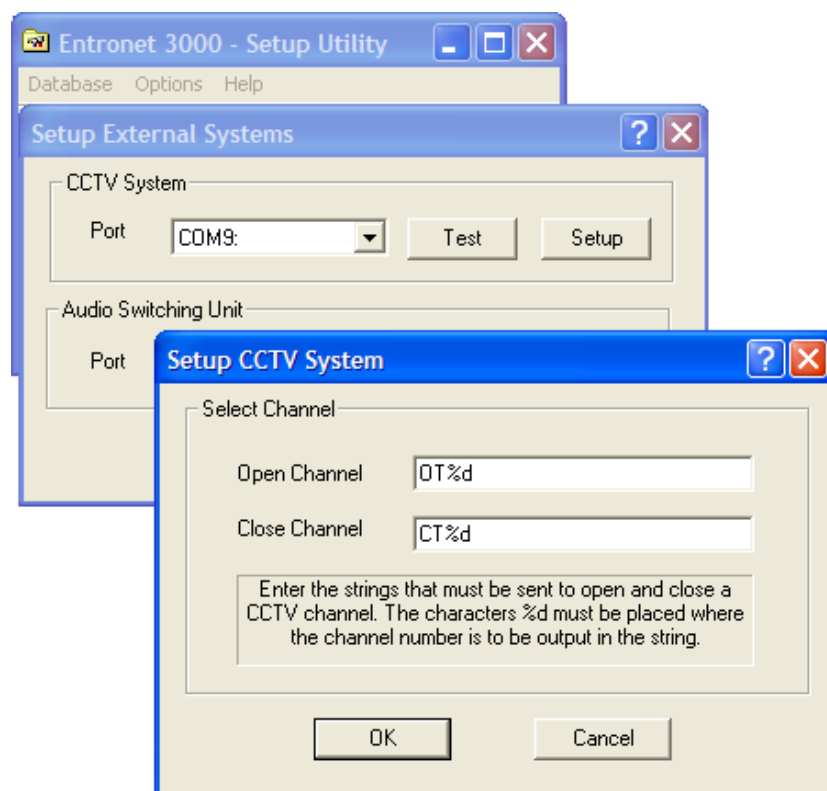
Concierge: as Supervisor but cannot edit resident details.

Remove Orphaned Residents

Residents and Dwellings use separate tables in the database. These tables are linked to associate residents with the dwelling they reside in. If a dwelling was to be removed from the database then any residents that were related to the dwelling would still remain in the Residents database but would not be associated with a dwelling. These are called Orphan entries in the Resident database. This function removes Orphaned Resident entries from the Resident database.

It is important to remove Orphaned Residents from the database if a dwelling is deleted otherwise residents will continue to appear in the Entronet 3000 Resident screen.

External systems



Entronet 3000 can be connected to a CCTV system to allow cameras associated with door panels to be viewed locally. Note that this facility only works with CCTV systems that can use serial data to control the output of the CCTV matrix.

Select the COM port to supply the control data to the matrix from the drop down box.

Click on Setup and input the command protocol to open and close the video stream. Different CCTV systems require different control strings, check with the CCTV Programming Guide or the manufacturers technical helpline to determine the format of the string.

Click on Test to check that the system operates correctly.

At the time of writing this guide the functionality for the Audio Switching Unit has not been implemented. Check the Entrotec website for updates of the Setup Manual.

Options

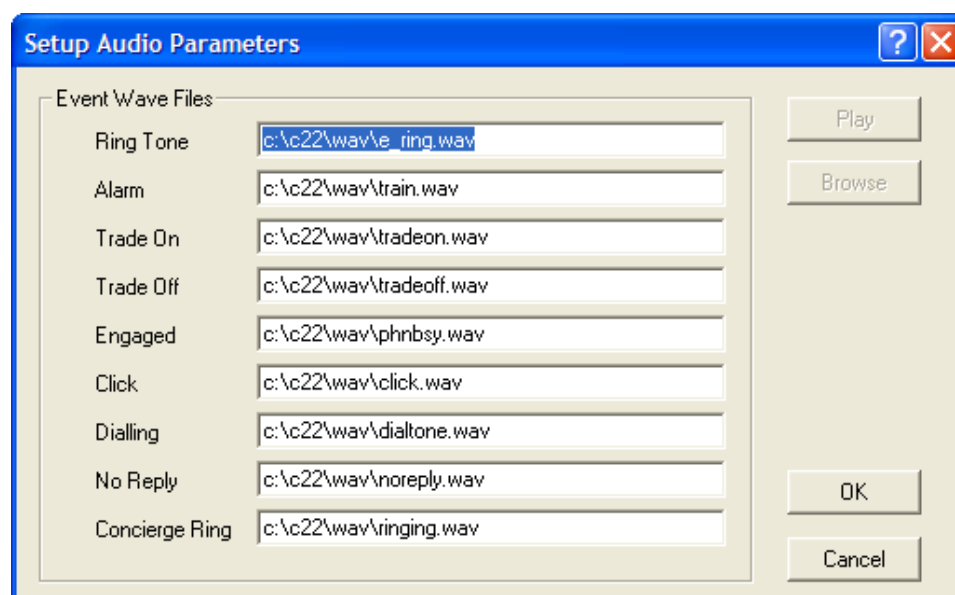
This drop down menu allows you to customise the way Entronet 3000 operates.

Archive

Determines where archived data, the resident database backup and system configuration backup is stored. This may be a drive on the concierge's workstation, a shared drive on another PC, or a network drive.

Audio, Wav Files

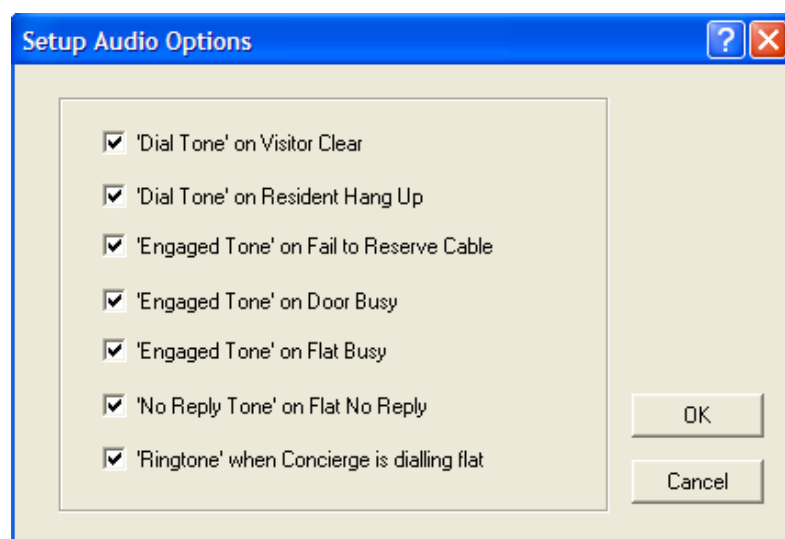
All audio prompts are produced by the Entronet 3000 program through the PC speakers. This option determines the location and file name for each of the system audio prompts. It is possible to use different WAV files from those provided with the Entronet 3000 program.



Note that at the time of publication Trade On and Trade Off are not used .

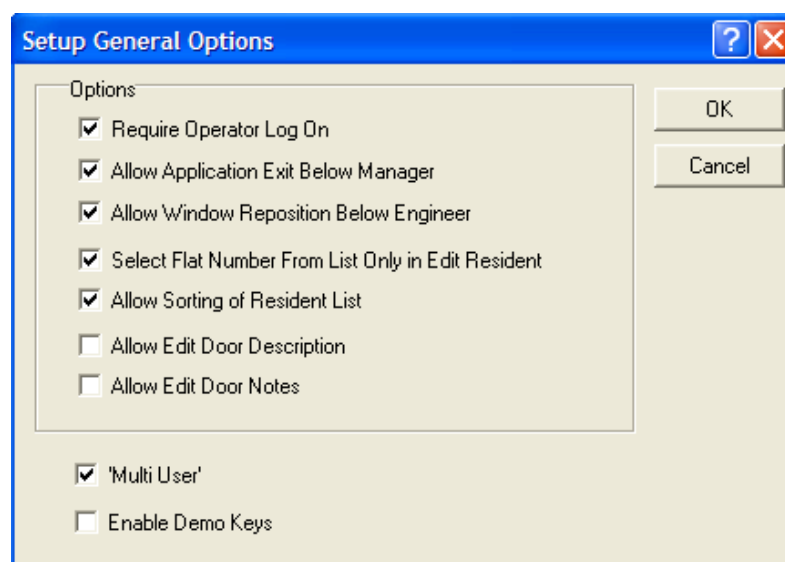
Audio, Options

This option allows the configuration of the played audio prompts.



Note that at time of publication Engaged Tone on Fail to Reserve Cable is not used.

Concierge, General



Require Operator Log On determines if the log on screen is displayed when Entronet 3000 starts, or when Log Off is selected in the Block Control Screen.

Allow Application Exit Below Manager determines if the Entronet 3000 program can be closed down using the windows Red Cross button for Supervisor and Concierge access levels.

Allow Window Reposition Below Engineer determines if the Entronet 3000 program window can be moved on the computer screen for Manager, Supervisor and Concierge access levels.

Select Flat Number From List Only in Edit Resident determines if you can add new residents into existing dwellings by selecting the dwelling number from the drop down box on the Edit Resident screen in the Resident tab.

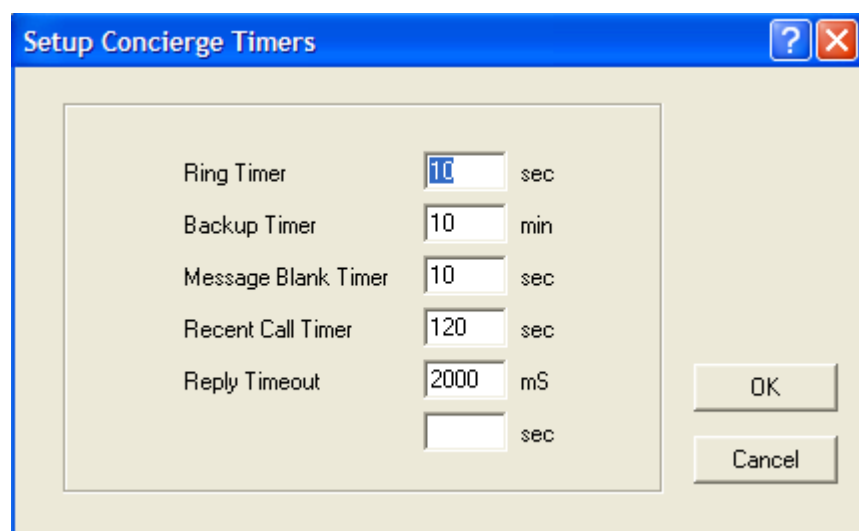
Allow Sorting of Resident List allows the resident list in the Resident tab to be sorted alpha-numerically by clicking on the title bar. For large databases sorting can take some time.

Allow Edit Door Description / Notes determines if the door description or notes can be modified from Edit Door in the Door tab.

Multi User determines if Entronet 3000 can be opened more than once on the same PC. Note that this does not affect having more than one PC on the Entronet network. It is still possible to have a PC operating the system and a separate PC to administer the Resident Database whether this option is checked or not.

Enable Demo Keys determines whether the system can automatically generate calls for Sales demonstration purposes. Do not have this enabled for live systems. When checked, F11 generates Concierge Call Down calls, F12 generates Concierge Door calls.

Concierge, Timers



Ring Timer determines the gap between ring tones.

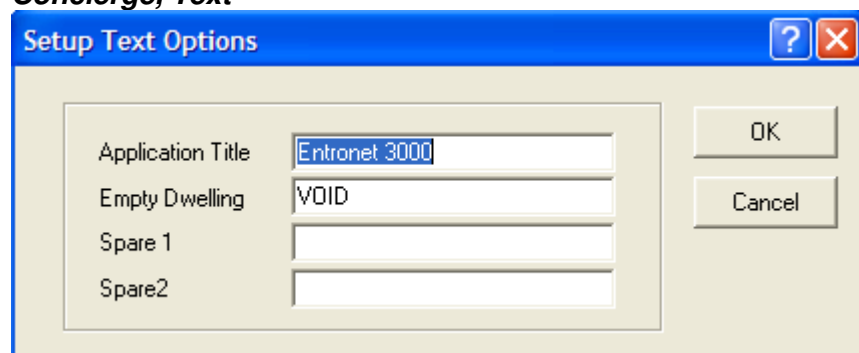
Backup Timer determines how frequently the calls get transferred to the Call History.

Message Blank Timer determines how long messages stay on the status bar.

Recent Call Timer determines how long calls stay on the Recent tab.

Reply Timeout is the period of time the system waits for a reply from a message being sent out. This should be increased if you are working over a high latency broadband connection.

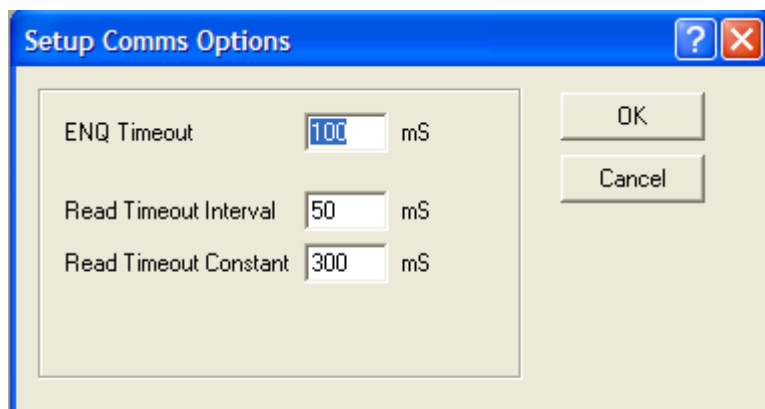
Concierge, Text



Application Title allows the application banner to be customised.

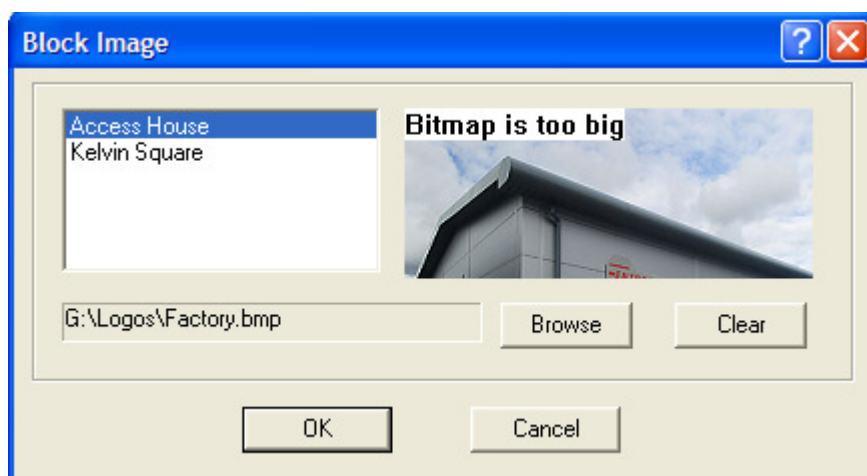
Empty Dwelling allows the title for automatically generated dwellings to be customised.

Comms



These parameters determine the equipment polling timing as seen on the Systems tab. The above times are default but may need to be increased if you are working on a high latency broadband connection and are missing system polls.

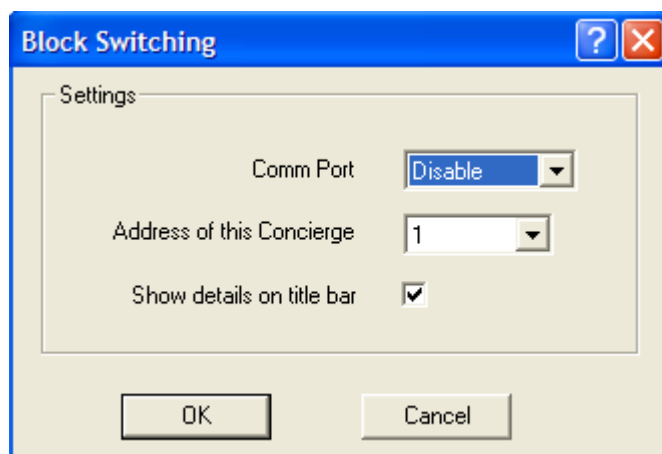
Block Imaging



This option allows you to determine the graphic image displayed in the Block Control tab. To define the image, select the block from the list and Browse for a picture (bitmap format).

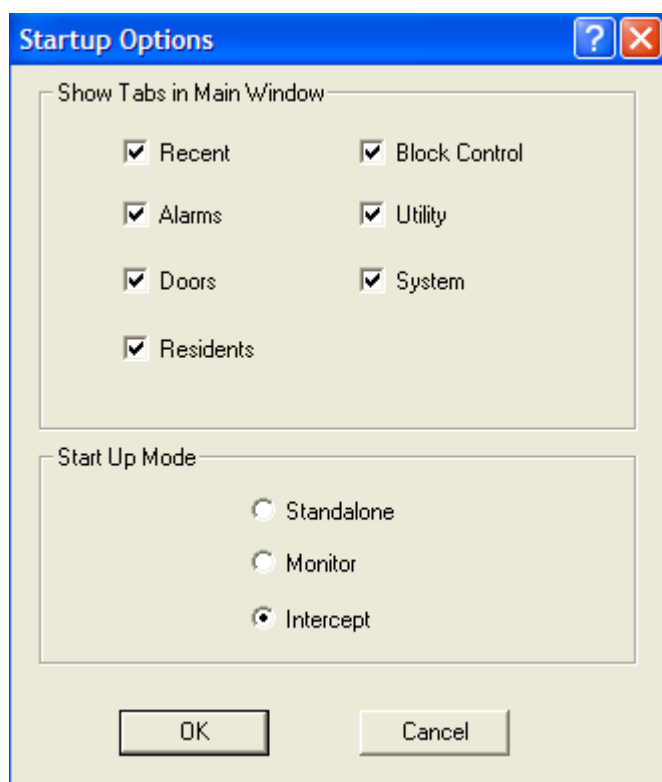
Any size image can be used, however an ideal size is 100 x 100 pixels. To avoid large margins in the Block Control tab keep all images the same size.

Block Switching



Enables the use of the Entronet 3000 Block Switching Unit for multiple concierge workstations.

Start Up



Show Tabs in Main Window enables you to configure which function tabs are visible to the concierge operator.

Start Up Mode determines which mode the Apex system is put into when you log on.

Help

Shows the Setup software version number.

All information is believed correct as of date of publication, and refers to Entronet 3000 V2.000. As Entrotec is continually developing system functionality so new features will be added. To ensure your documents are up to date please visit www.entrotec.co.uk for the latest version.

Copyright Entrotec Ltd 2009. No parts, extracts, or diagrams may be copied or used without the express permission of Entrotec Ltd.